

**A HEMISPHERE OF  
OPPORTUNITY.  
*FOR ALL.***





In 2019, PADF helped 2.5m people improve their lives.

## PROVIDING TOOLS FOR CHANGE

In Arauquita, Colombia, home to one of the finest cocoa varieties in the world, we trained a group of eight female cocoa producers to manage a more efficient business through a coordinated effort with the municipal government, private sector, and local community.

The women learned how to reduce production costs while improving the quality of their products.





## WHO WE ARE

The Pan American Development Foundation (PADF) believes in creating a hemisphere of opportunity, for all. We work across Latin America and the Caribbean to make our region stronger— more healthy, peaceful, just, inclusive, resilient, and sustainable for current and future generations. For nearly 60 years, we have served the most vulnerable communities, investing resources throughout the hemisphere.

We partner with and enable civil society, governments, and the private sector for the greater good of the region.

**PADF is a 501(c)(3) nonprofit organization established by the Organization of American States (OAS) in 1962.**

As a strategic partner and proud affiliate of the OAS, we are part of the Inter-American System while maintaining an independent status. We are committed to upholding OAS' values and supporting its mission of achieving more rights for more people.







## WHAT WE DO

We work with vulnerable populations across Latin America and the Caribbean to improve Human Development and Human Security. Our work is driven by impact and informed by the global sustainable development goals that provide a shared blueprint for peace and prosperity for people and the planet, now and into the future, in our key areas.

## KEY AREAS

### HUMAN SECURITY

- DEMOCRACY, GOVERNANCE, AND HUMAN RIGHTS
- PEACE, JUSTICE, AND SECURITY

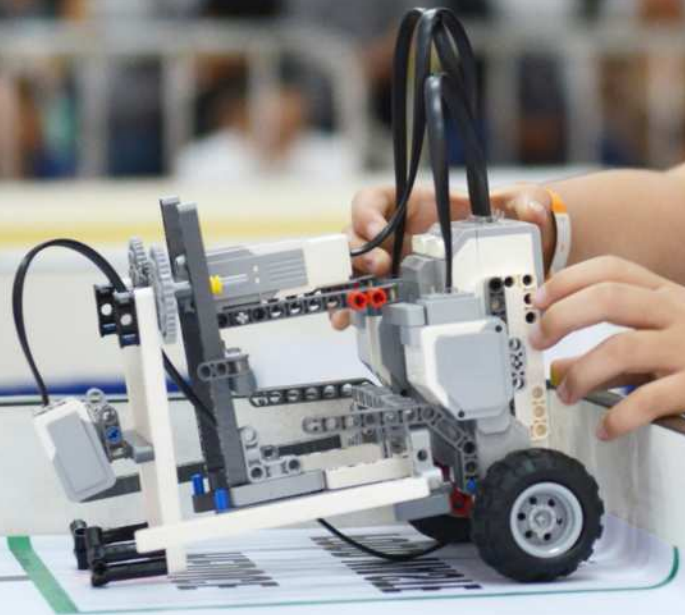
### HUMAN DEVELOPMENT

- DISASTER RESILIENCE
- ECONOMIC OPPORTUNITIES
- EDUCATION
- ENVIRONMENT
- HEALTH AND NUTRITION



## WHO WE SUPPORT AND EMPOWER

At the heart of what we do, is our commitment to serving the most vulnerable communities. Our mission is driven by our firm belief in creating a hemisphere of opportunity, *for all*.



- WOMEN AND GIRLS
- MIGRANTS AND DISPLACED PERSONS
- YOUTH
- INDIGENOUS GROUPS
- AFRO-DESCENDANTS
- LGBTQ+



## ACCOUNTABILITY

With nearly 60 years of experience across Latin America and the Caribbean and strong partnerships with local communities, civil society, and public and private sectors, we have an impeccable track record of success with extensive in-country networks and around financial controls.

In 2019, 90 percent of our expended resources were used to implement programs that benefitted vulnerable communities.

## OUR EDGE

We are uniquely positioned to develop and implement adaptable programs across multiple technical areas, quickly deploy to any country in the region and activate existing local networks, measure and evaluate our impact with comprehensive performance indicators, and communicate our progress through integrated communications strategies.





650,000+

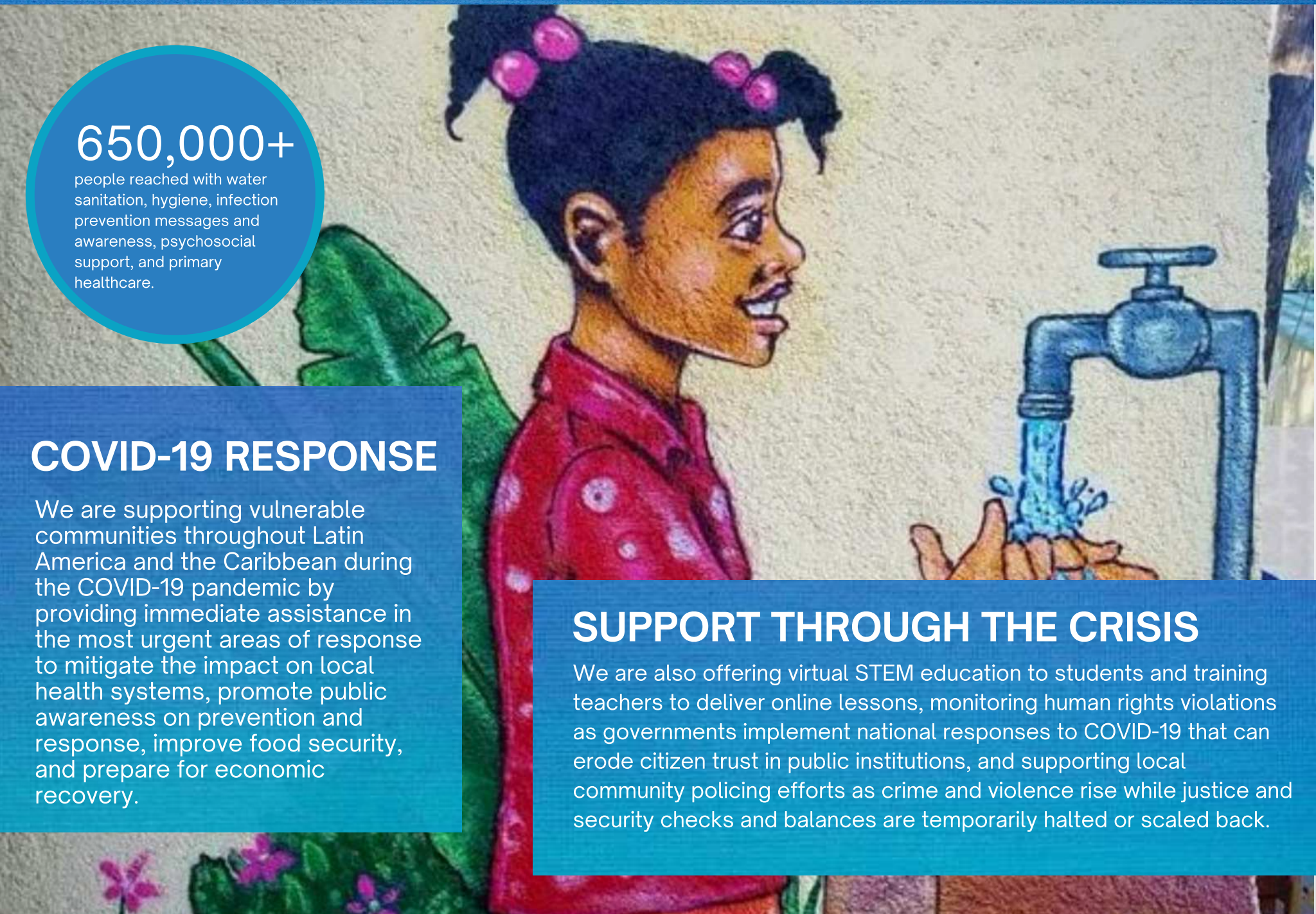
people reached with water sanitation, hygiene, infection prevention messages and awareness, psychosocial support, and primary healthcare.

## COVID-19 RESPONSE

We are supporting vulnerable communities throughout Latin America and the Caribbean during the COVID-19 pandemic by providing immediate assistance in the most urgent areas of response to mitigate the impact on local health systems, promote public awareness on prevention and response, improve food security, and prepare for economic recovery.

## SUPPORT THROUGH THE CRISIS

We are also offering virtual STEM education to students and training teachers to deliver online lessons, monitoring human rights violations as governments implement national responses to COVID-19 that can erode citizen trust in public institutions, and supporting local community policing efforts as crime and violence rise while justice and security checks and balances are temporarily halted or scaled back.







## SUPPORT OUR WORK

We invite you to support our work and help us achieve meaningful and sustainable progress in Latin America and the Caribbean!

"With your generous support and partnership, we promote sustainable livelihoods and access to opportunities for the most vulnerable communities in the hemisphere during this global crisis and beyond."

**Katie Taylor**  
PADF Executive Director



A HEMISPHERE OF OPPORTUNITY. *FOR ALL.*

## HELP US SPREAD THE WORD.

Please share this brochure with your friends, family or colleagues and help us provide the opportunity to thrive. You can also follow us on social media, visit our website or email us using the address below to find out how you can support real change.



[www.PADF.org](http://www.PADF.org)  
[connect@padf.org](mailto:connect@padf.org)

